

2025



CITY OF
ARCADIA



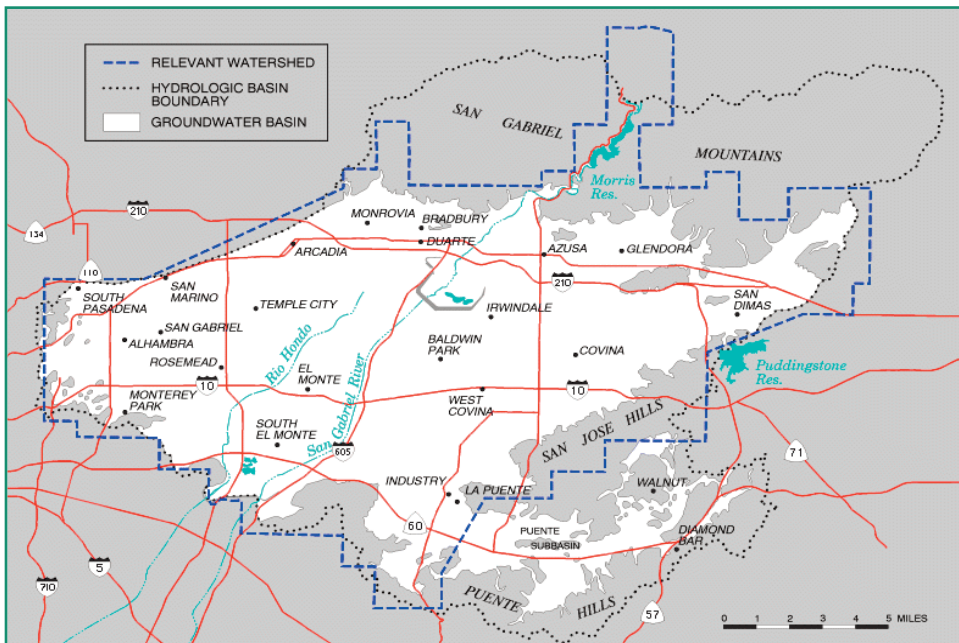
ANNUAL WATER QUALITY REPORT

The City of Arcadia is committed to keeping you informed on the quality of your drinking water and providing you with safe, reliable, high-quality water. This report is provided to you annually and includes information describing where your drinking water comes from, the constituents found in your drinking water, and how the water quality compares with regulatory standards. The drinking water provided by the City of Arcadia in 2025 complies with all Federal and State drinking water standards

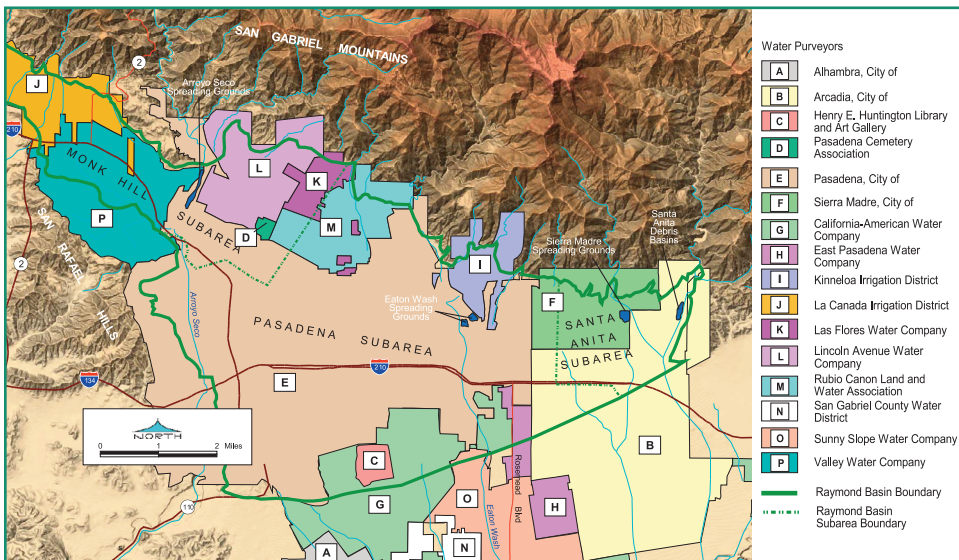
City Council meetings provide an opportunity for public participation in decisions that may affect the quality of your water. Regularly scheduled meetings of the City Council are held on the first and third Tuesday of each month at 7:00 PM in the City Council Chambers located at 240 West Huntington Drive in Arcadia.

Where Does My Drinking Water Come From?

The water supply for the City of Arcadia comes from two sources: (1) groundwater from wells in the Main San Gabriel Basin; and (2) groundwater from wells in the Raymond Basin.



Main San Gabriel Basin



Raymond Basin

Groundwater comes from natural underground aquifers that are replenished with local rainwater and imported water. The groundwater basins from which the City of Arcadia pumps its water lay beneath the San Gabriel Valley. More than 30 retail water systems draw from the basins to provide water to residents and businesses.

What are Water Quality Standards?

In order to ensure that tap water is safe to drink, the United States Environmental Protection Agency (USEPA) and the State Water Resources Control Board, Division of Drinking Water (DDW) prescribe regulations that limit the amount of certain contaminants in water provided by public water systems. The U.S. Food and Drug Administration regulations and California law also establish limits for contaminants in bottled water that provide the same protection for public health.

Drinking water standards established by USEPA and DDW set limits for substances that may affect consumer health or aesthetic qualities of drinking water. The chart in this report shows the following types of water quality standards:

- Maximum Contaminant Level (MCL):** The highest level of a contaminant that is allowed in drinking water. Primary MCLs are set as close to the Public Health Goals (PHGs) (or MCLGs) as is economically and technologically feasible. Secondary MCLs are set to protect the odor, taste, and appearance of drinking water.
- Maximum Residual Disinfectant Level (MRDL):** The highest level of a disinfectant allowed in drinking water. There is convincing evidence that addition of a disinfectant is necessary for control of microbial pathogens.
- Primary Drinking Water Standard:** MCLs and MRDLs for contaminants that affect health along with their monitoring and reporting requirements, and water treatment requirements.
- Regulatory Action Level (AL):** The concentration of a contaminant which, if exceeded, triggers treatment or other requirements that a water system must follow.
- Notification Level (NL):** An advisory level which, if exceeded, requires the drinking water system to notify the governing body of the local agency in which users of the drinking water reside (i.e. City Council, Board of Directors, and County Board of Supervisors).

What is in My Drinking Water?

Your drinking water is regularly tested using DDW-approved methods to ensure its safety. The table in this report lists all the constituents detected in your drinking water that have Federal and State drinking water standards. Detected unregulated constituents and other constituents of interest are also included. The State allows the City to monitor for some contaminants less than once per year because the concentrations of these contaminants do not change frequently. Some of the data, though representative, is more than one year old.

Arsenic

While your drinking water meets the federal and state standard for arsenic, it does contain low levels of arsenic. The arsenic standard balances the current understanding of arsenic's possible health effects against the cost of removing arsenic from drinking water. The USEPA continues to research the health effects of low levels of arsenic, which is a mineral known to cause cancer in humans at high concentrations and is linked to other health effects such as skin damage and circulatory problems.

Lead in Tap Water

Lead can cause serious health problems, especially for pregnant women and young children. Lead in drinking water is primarily from materials and components associated with service lines and home plumbing. The City of Arcadia is responsible for providing high quality drinking water and removing lead pipes, but cannot control the variety of materials used in plumbing components in your home. You share the responsibility for protecting yourself and your family from the lead in your home plumbing. You can take responsibility by identifying and removing lead materials within your home plumbing and taking steps to reduce your family's risk. Before drinking tap water, flush your pipes for several minutes by running your tap, taking a shower, doing laundry, or a load of dishes. You can also use a filter certified by an American National Standards Institute accredited certifier to reduce lead in drinking water. If you are concerned about lead in your water and wish to have your water tested, contact the City of Arcadia at (626) 254-2700. Information on lead in drinking water, testing methods, and steps you can take to minimize exposure is available at <https://www.epa.gov/safewater/lead>.

A lead service line inventory was conducted in 2024, and no lead services were found in the City of Arcadia's Distribution System. You may request a summary of the assessment to be sent to you by contacting the City of Arcadia, Public Works Services Department at (626) 254-2700.

Fluoride in Drinking Water

Our local groundwater is not supplemented with fluoride. Fluoride levels in drinking water are limited under California state regulations at a maximum dosage of 2 parts per million (ppm).

Drinking Water Source Assessment

In accordance with the Federal Safe Drinking Water Act, an assessment of the drinking water sources for the City of Arcadia was completed in December 2002. The purpose of the drinking water source assessment is to promote source water protection by identifying types of activities in the proximity of the drinking water sources which could pose a threat to the water quality. The assessment concluded that the City of Arcadia's sources are considered vulnerable to the following activities or facilities associated with contaminants detected in the water supply: gasoline stations, automobile repair shops, chemical/petroleum pipelines, utility stations, electrical/electronic manufacturing, waste dumps/landfills, high density housing, and dry cleaners. In addition, the sources are considered most vulnerable to the following activities or facilities not associated with contaminants detected in the water supply: sewer collection systems, car washes, transportation corridors, junk/scrap/salvage yards, and above or below ground storage tanks. A copy of the complete drinking water source assessment is available at the City of Arcadia, Public Works Services Department located at 11800 Goldring Road, in Arcadia. You may request a summary of the assessment to be sent to you by contacting the City of Arcadia, Public Works Services Department at (626) 254-2700.

Groundwater Facts

Groundwater is water from rainfall and snowmelt that seep down through layers of soil, becoming embedded between rock particles and saturating in aquifers. This freshwater is stored between rock formations like an underground lake, forming a groundwater basin. Groundwater slowly flows underground, generally at a downward angle, and may eventually seep into streams, lakes, and oceans. The City of Arcadia relies almost exclusively on groundwater pumped from the Main San Gabriel and Raymond Basins.

Groundwater is a fragile resource that can be easily polluted. It is slow moving, difficult to monitor, expensive to treat, and slow to recharge. Protecting Arcadia's drinking water source is everyone's responsibility. You can help protect our water by eliminating or reducing excess use of fertilizers and pesticides, picking up after your pets, using water efficiently, and disposing of chemicals properly.

For more information on our local groundwater basins, visit thewatersthatconnectus.com.

Limit Runoff

Water runoff from car washing, leaking sprinklers, and excessive irrigation that flows into the street picks up hazardous substances such as fertilizer, chemicals, oil, and pet waste. This runoff goes into the City's storm drain system and flows to the ocean, carrying chemicals into it and harming sea life. By limiting the amount of water running off your property, you can help protect the environment and save water at the same time!

City of Arcadia - 2025 Water Quality Table

Constituent and (units)	MCL or [MRDL]	PHG (MCLG) or [MRDLG]	DLR	LOCAL GROUNDWATER Result (a)	Range (Min-Max)	Typical Origins
PRIMARY DRINKING WATER STANDARDS - Health-Related Standards						
Disinfectant and Disinfection Byproducts (b)						
Total Trihalomethanes (TTHM) (µg/l)	80	NA	NA	11	3.6 - 14	Byproduct of drinking water chlorination
Haloacetic acids (five) (HAA5) (µg/l)	60	NA	NA	2	ND - 3	Byproduct of drinking water disinfection
Chlorine Residual (mg/l)	[4]	[4]	NA	0.96	0.19 - 1.6	Drinking water disinfectant
Inorganic Chemicals						
Arsenic (µg/l)	10	0.004	2	<2	ND - 6.4	Erosion of natural deposits
Fluoride, Naturally-occurring (mg/l)	2	1	0.1	0.56	0.28 - 1.2	Erosion of natural deposits
Hexavalent Chromium (µg/l)	10	0.02	0.1	3.0	0.56 - 9.0	Erosion of natural deposits
Nitrate as N (mg/l)	10	10	0.4	1.9	0.83 - 4.4	Runoff and leaching from fertilizer use
Perchlorate (µg/l)	6	1	1	<1	ND - 2.2	Discharge from industrial activities
Radioactivity (c)						
Uranium (pCi/l)	20	0.43	1	2.5	ND - 5.2	Erosion of natural deposits
SECONDARY DRINKING WATER STANDARDS - Aesthetic Standards, Not Health-Related						
Chloride (mg/l)	500	NA	NA	31	8.9 - 55	Runoff/leaching from natural deposits
Iron (µg/l)	300	NA	NA	8.6	ND - 43	Runoff/leaching from natural deposits
Odor (threshold odor number)	3	NA	NA	ND	ND - 1	Naturally-occurring organic materials
Sulfate (mg/l)	500	NA	NA	54	18 - 100	Runoff/leaching from natural deposits
Specific Conductance (µmho/cm)	1600	NA	NA	530	310 - 810	Substances that form ions in water
Total Dissolved Solids (mg/l)	1000	NA	NA	330	180 - 490	Runoff/leaching from natural deposits
Turbidity (NTU)	5	NA	NA	0.22	0.10 - 0.30	Runoff/leaching from natural deposits
UNREGULATED CONSTITUENTS OF INTEREST						
Hardness as CaCO3 (mg/l)	NA	NA	NA	210	23 - 340	Runoff/leaching from natural deposits
Perfluorohexane Sulfonic Acid (PFHxS) (ng/l)	NL = 3*	NA	NA	<3	ND - 2.5	Discharge from industrial activities
Perfluorooctane Sulfonic Acid (PFOS) (ng/l)	NL = 6.5*	1	NA	7.6	ND - 8.4	Discharge from industrial activities
Perfluorooctanoic Acid (PFOA) (ng/l)	NL = 5.1*	0.007	NA	<4	ND - 3.8	Discharge from industrial activities
Sodium (mg/l)	NA	NA	NA	29	17 - 53	Runoff/leaching from natural deposits
UNREGULATED CONSTITUENTS REQUIRING MONITORING AT ENTRY POINTS INTO THE DISTRIBUTION SYSTEM						
Perfluorooctane Sulfonic Acid (PFOS) (ng/l)**	NL = 6.5*	1	NA	<4	ND - 10	Discharge from industrial activities
LEAD AND COPPER TESTING AT RESIDENTIAL TAPS						
Lead/Copper	Action Level (AL)	PHG	90th Percentile Value	Range (Min-Max)	Typical Origins	
Copper (mg/l) (d)	1.3	0.3	0.29	ND - 0.85	Corrosion of household plumbing system	
Lead (µg/l) (d)	15	0.2	ND	ND	Corrosion of household plumbing system	

Notes

mg/l = parts per million or milligrams per liter	AL = Action Level	ND = Not Detected at DLR
µg/l = parts per billion or micrograms per liter	DLR = Detection Limit for the Purpose of Reporting	NA = No Applicable Limit
ng/l = parts per trillion or micrograms per liter	MCL = Maximum Contaminant Level	NL = Notification Level
pCi/l = picoCuries per liter	MCLG = Maximum Contaminant Level Goal	PHG = Public Health Goal
µmho/cm = micromhos per centimeter	MRDL = Maximum Residual Disinfectant Level	< = Detected but average is below the DLR
NTU = Nephelometric Turbidity Units	MRDLG = Maximum Residual Disinfectant Level Goal	

- (a) The results reported in the table are average concentrations of the constituents detected in your drinking water during year 2025 or from the most recent tests done in compliance with regulations (2023-2025), except for TTHM, HAA5, lead and copper which are described below.
- (b) Four (4) locations in the distribution system are tested quarterly for disinfection byproducts. The highest locational running annual averages for TTHM and HAA5 are reported as "Result." The maximum and minimum of the individual results for TTHM and HAA5 are reported as "Range." Twenty (20) locations are tested weekly for chlorine residual.
- (c) Sources were sampled between 2018 to 2025. The most recent results are included.
- (d) Thirty (30) residences were sampled in September 2025. Concentrations were measured at the tap. Copper was detected at twenty-six (27) locations; none exceeded the copper Action Level. Lead was not detected at any of the locations. The next round of lead and copper samples will be collected in 2028.

* Effective October 29, 2025 the Notification Levels for PFHxS, PFOA, and PFOS were revised to 3.0 ng/l, 4.0 ng/l, and 4.0 ng/l, respectively.

** Monitoring conducted in 2024 as part of the Fifth Unregulated Contaminant Monitoring Rule (UCMR5)

What is a Water Quality Goal?

In addition to mandatory water quality standards, USEPA and DDW have set voluntary water quality goals for some contaminants. Water quality goals are often set at such low levels that they are not achievable in practice and are not directly measurable. Nevertheless, these goals provide useful guideposts and direction for water management practices. The chart in this report includes three types of water quality goals:

- **Maximum Contaminant Level Goal (MCLG):** The level of a contaminant in drinking water below which there is no known or expected risk to health. MCLGs are set by USEPA.
- **Maximum Residual Disinfectant Level Goal (MRDLG):** The level of a drinking water disinfectant below which there is no known or expected risk to health. MRDLGs do not reflect the benefits of the use of disinfectants to control microbial contaminants.
- **Public Health Goal (PHG):** The level of a contaminant in drinking water below which there is no known or expected risk to health. PHGs are set by the California Environmental Protection Agency.

What Contaminants May be Present in Sources of Drinking Water?

The sources of drinking water (both tap water and bottled water) include rivers, lakes, streams, ponds, reservoirs, springs and wells. As water travels over the surface of the land or through the ground, it dissolves naturally occurring minerals and, in some cases, radioactive material, and can pick up substances resulting from the presence of animals or from human activity.

Contaminants that may be present in source water include:

- **Microbial contaminants**, such as viruses and bacteria that may come from sewage treatment plants, septic systems, agricultural livestock operations, and wildlife
- **Inorganic contaminants**, such as salts and metals, that can be naturally occurring or result from urban stormwater runoff, industrial

or domestic wastewater discharges, oil and gas production, mining, or farming.

- **Pesticides and herbicides**, which may come from a variety of sources such as agriculture, urban stormwater runoff, and residential uses.
- **Radioactive contaminants**, that can be naturally occurring or be the result of oil and gas production and mining activities.
- **Organic chemical contaminants**, including synthetic and volatile organic chemicals that are byproducts of industrial processes and petroleum production, and can also come from gas stations, urban stormwater runoff, agricultural application, and septic systems.

Drinking water, including bottled water, may reasonably be expected to contain at least small amounts of some contaminants. The presence of contaminants does not necessarily indicate that water poses a health risk. More information about contaminants and potential health effects can be obtained by calling the USEPA's Safe Drinking Water Hotline at (800) 426-4791.

Are There Any Precautions the Public Should Consider?

Some people may be more vulnerable to contaminants in drinking water than the general population. Immuno-compromised persons such as persons with cancer undergoing chemotherapy, persons who have undergone organ transplants, people with HIV/AIDS or other immune system disorders, some elderly, and infants can be particularly at risk from infections. These people should seek advice about drinking water from their health care providers. USEPA/Centers for Disease Control (CDC) guidelines on appropriate means to lessen the risk of infection by Cryptosporidium and other microbial contaminants are also available from the Safe Drinking Water Hotline (1-800-426-4791).

2025 UTILITY CAPITAL IMPROVEMENT PROJECTS

Every day, Arcadia's wells pump water from the Main San Gabriel and Raymond basins into the water distribution system, serving high-quality drinking water to the community. As part of the City's Capital Improvement Program (CIP), maintenance projects improving reliability and efficiency of the City's utility infrastructure are implemented on an annual basis. These projects are vital in preserving infrastructure reliability, ensuring that safe and clean water is delivered with minimal service interruption.

The City's Public Works Services Department works on scheduled CIP projects each year. In 2025, the following projects were completed:

- As part of the valve exercising program, valves in the water distribution system were inspected to verify functionality and to identify valves that are broken or in need of repair. The valve replacement project at Santa Anita Plant and Peck Well aimed to replace inoperable valves to ensure a smooth emergency shutdown.
- A feasibility study was completed to identify the most cost-effective treatment/mitigation options for water contaminants at the Peck Well Facility.
- The City continues to operate and maintain 10 groundwater wells, which produce an average of 14,000 acre-feet, or 4.6 billion gallons, of water to Arcadia customers each year.

Water Conservation

Outdoor irrigation is permitted before 9:00 a.m. and after 6:00 p.m. only on Tuesdays and Saturdays to minimize evaporation. Arcadia also asks residents to limit overhead sprinklers to 10 minutes per station to avoid creating runoff. Trees and shrubs may be irrigated any day of the week within the permitted hours using a hand-held hose with a shut-off nozzle attachment. Outdoor rebates are available for these water saving tools!

The City's Water Conservation Program offers a variety of excellent resources to help our customers be water-wise, including indoor and outdoor water rebates, events, and giveaways. The City has recently launched a new toilet rebate for our residents who purchase ultra-low flow WaterSense approved toilets.

If you are interested in learning more information regarding Arcadia's water conservation efforts, visit our page at: www.arcadiaca.gov/waterconservation.

WaterSmart Software

Since 2015, the City of Arcadia has partnered with WaterSmart Software to provide customers with a more complete understanding of their water use. WaterSmart provides monthly reports that are accessible online.

The WaterSmart report and online portal will help you to:

- View and understand your recent water use in gallons and how it compares to similar households throughout Arcadia.
- Find easy and effective tips to save water and money, with step-by-step advice.
- Register your account in the portal to update your information and access special features.
- Sign-up to receive notifications and e-mail alerts if your water consumption indicates a possible leak.
- Stay up-to-date on City of Arcadia water conservation news, programs, and events!

The City provides an electronic copy of Home Water Reports on WaterSmart. To sign up, visit www.arcadia.watersmart.com.

Hard copies of the 2025 Water Quality Report are available at Arcadia City Hall Lobby, Arcadia Public Works Services Department, Arcadia Public Library, and Arcadia Community Center.



Questions?

For more information or questions regarding this report, please contact the City of Arcadia, Public Works Services Department at (626) 254-2700.

Este informe contiene información muy importante sobre su agua potable. Para más información ó traducción, favor de contactar the City of Arcadia, Public Works Services Department. Telefono: (626) 254-2700.

此份有關你的食水報告,內有重要資料和訊息,請找他人為你翻譯及解釋清楚。